

UCLA HANOLIM PROUDLY PRESENTS  
A KOREAN CULTURE NIGHT PRODUCTION

WHEN  
you fly

a BUTTERFLY

UCLA ROYCE HALL  
APRIL 7, 2016  
7:00 PM



# HANOOOLIM

Hanoolim: Korean Cultural awareness group at UCLA is proud to present its 24th annual Korean Culture Night. With the dedication and hard work of every member involved, Hanoolim continues to strive to showcase one of the most renowned Korean American college student productions in the United States.

Hanoolim aims to spread awareness of Korean and Korean American culture among peers and its community. Our mission is to educate UCLA students, especially but not limited to, Korean American students, of Korean culture and history through volunteer services, open discus-

sion, and cultural arts performances. It is with great pride that we bring Korean Culture Night to you.



MINYOUNG LEE  
president

## PRESIDENT'S MESSAGE

### HANOOOLIM STAFF

MINYOUNG LEE

President

HAZEY KIM

External VP /

Gayageum Coordinator

JENNIFER KIM

Internal VP

SCOTT KANG

Public Relations Manager

SHARON LEE

Public Relations Manager

PATRICK KELLY

Finance Manager

MARK SONG

Events Coordinator /

Historian

JULIA YI

Poongmul Coordinator

SALLY OH

Poongmul Coordinator

HARRY KIM

Graphic Designer

Welcome to Korean Culture Night 2016: *When You Kill a Butterfly*. Thank you everyone for coming to and supporting our show tonight. It has been decades since Hanoolim first hosted Korean Culture Night, and it is astounding what KCN has grown into. KCN's talented staff, coordinators,

performers, and composers consist of more than 100 students of diverse backgrounds, and tonight's show is the culmination of more than a year's worth of sweat, tears, and creative collaboration. This year's KCN is held in remembrance of the histories of comfort women, to honor and recognize the

hardships that they had to endure. I would like to give special thanks to alumni, professors, Nabi foundation, Center for Korean Studies without whom the show would not have been possible. Thank you for coming and supporting KCN 2016, and I hope you enjoy the show tonight.

# PRODUCERS' MESSAGE



ERIC LIM  
executive producer



EDDIE KANG  
associate producer

Dearest family and friends,

On behalf of Korean Culture Night 2016, it is with great honor and pleasure to welcome you to this year's musical production, *When You Kill A Butterfly*.

For more than 20 years, Korean Culture Night has introduced and promoted the traditions of Korean and Korean-American culture to both UCLA and the greater Los Angeles community. This entirely student-led production has become a catalyst for cultivating creativity and talent from a diverse group of Bruins. Their passion and devotion has turned UCLA KCN into the largest Korean American student-run production in the nation.

This year's production, *When You Kill A Butterfly*, discusses a very difficult topic that we have never approached before. "Comfort Women" is a euphemism that refers to a system of military sexual slavery by the government of Japan during its colonial and wartime occupation of Asia before and during WWII. Despite the difficulty of discussing a topic of this magnitude, we decided that as the next generation of Korean Americans, it is our duty to pay homage to and honor our women. After all, our cultural identity is made up not only of the fun, but also of the painful. The stories of the "Comfort Women" are not just stories--they are truths we must share, no matter how horrendous they may be.

We put on this show with a heavy but proud and swelling heart. It is an incredible feeling to see this production come alive from a small team to a show of 130 students. We invite you to celebrate and share this special night with us. We now humbly present to you the product of a year's hard work forged through blood, sweat and tears.



### KCN STAFF

ERIC LIM

Executive Producer

EDDIE KANG

Associate Producer

JOSH KANG

Director

JENNY KIMOON

Senior Advisor

DIANE KIM

Assistant Director

LOIS JEON

External Finance Manager

JI YUN GIM

Public Relations Manager

ESTHER PARK

Production Manager

RICHARD KANG

Internal Finance Manager

ANDREW KIM

Finance Assistant

ANDREW KONG

Production Assistant

JISOO PARK

Public Relations Assistant

TABLE OF CONTENTS

HANOO LIM PRESIDENT’S MESSAGE \_\_\_\_ 2

PRODUCER’S MESSAGE \_\_\_\_\_ 3

CREDITS & CAST \_\_\_\_\_ 5

PROGRAM \_\_\_\_\_ 6

TIME & SETTING \_\_\_\_\_ 7

PERFORMANCES \_\_\_\_\_ 9

LETTER FROM CONGRESS \_\_\_\_\_ 11

LETTER FROM LOS ANGELES MAYOR AND UCLA DEAN \_\_\_\_\_ 12

LETTER FROM CHA IN PYO \_\_\_\_\_ 13

CAST \_\_\_\_\_ 15

MODERN \_\_\_\_\_ 17

POONGMUL \_\_\_\_\_ 23

B-BOY \_\_\_\_\_ 27

TRADITIONAL \_\_\_\_\_ 31

SET DESIGN \_\_\_\_\_ 32

MEDIA TEAM \_\_\_\_\_ 34

ORCHESTRA \_\_\_\_\_ 35

COSTUME DESIGN, EXECUTIVE & CREATIVE STAFF \_\_\_\_\_ 36

SPECIAL THANKS \_\_\_\_\_ 38

SPARK CAMPAIGN \_\_\_\_\_ 39

CREDIT & CAST

EXECUTIVE STAFF

ERIC LIM  
executive producer

EDWARD KANG  
associate producer

JENNY KIM  
senior advisor

ESTHER PARK  
production manager

JIYUN GIM  
public relations manager

LOIS JEON  
external finance manager

RICHARD KANG  
internal finance manager

ANDREW KONG  
production assistant

ANDREW KIM  
finance assistant

JISOO PARK  
public relations assistant

COORDINATORS

NAYUN LEE  
modern

JOE LEE  
modern

JAMES LEE  
b-boy

MATT CHAN  
b-boy

ALEXANDRIA LEE  
traditional

KAYLA CHOE  
traditional

SALLY OH  
poongmul

JULIA YI  
poongmul

EUNHAE YOO  
set design

ESTHER SIM  
set design

SUSAN CHO  
set design

STEPHEN SPIES  
music composition

KATE BACICH  
music composition

DAVID HAN  
costume

YOONA JUN  
graphic design

CAST

ALEX KIM  
colonel hayashi

CHRIS HONG  
na kyung soo

CLAIRE HUH  
ms. lee

EUNICE LIM  
lee young ja

GRACE PARK  
koo se joo

JIMI LEE  
sergeant morimoto

JOSH HOON KANG  
kim young ho

JUNA YI  
kim yoon bok

KEVIN JOUNG  
captain kimura

KIJU LEE  
hwang jung hee

ROSE LEE  
koo jin sook

SAM LEE  
choi dong hyun

CREATIVE STAFF

JOSH KANG  
director

DIANE KIM  
assistant director

MEDIA TEAM

NICOLE FAN  
graphic design

VANESSA CHUNG  
graphic design

YOONA JUN  
graphic design

JORDAN CHURCH  
photographer

MATTHEW PAK  
photographer

ELIOTT KIM  
photographer

PERNELL QUILON  
videographer

SUNGJOON BAEK  
web master

ERIC CHUNG  
sound engineer



# PROGRAM

## ACT 1

- scene 1 - spring, summer, home  
(with TRADITIONAL DANCE)
- scene 2 - welcome to the war
- scene 3 - eight months
- scene 4 - broken promises
- scene 5 - we will fight (musical scene)
- scene 6 - irreversible  
(with TRADITIONAL DANCE)

## INTERMISSION

## ACT 2

- scene 1 - numb (musical scene)
- scene 2 - in the dead of night
- scene 3 - infiltration  
(with POONGMUL & BBOY)
- scene 4.1 - flicker of hope
- scene 4.2 - captured (with MODERN DANCE)
- scene 5 - hopeless fools (musical scene)
- scene 6 - sacrifice
- scene 7 - in another life
- scene 8 - when you kill a butterfly
- scene 9 - monsters
- scene 10 - rise with us (musical scene)

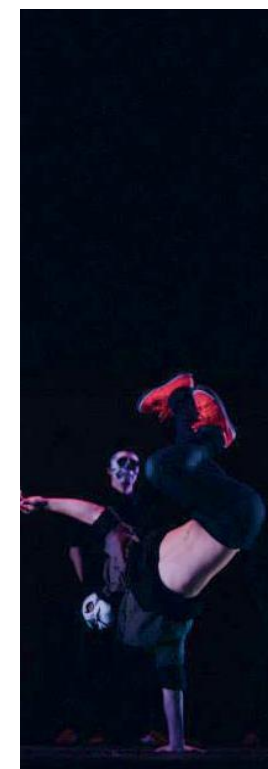


The Original Korean Brand

# Taste of Korea



Although members of the group originally premiered as a hip-hop collaboration with Poongmul during KCN 2009, KCN B-boys have become an official component of KCN recently. Formed by a close group of dancers who are bound by a passion for b-boying (also known as “break-dancing”), the KCN B-boys hope to express a highly skilled and intricate style of movements that is both visually stunning and mesmerizing.



## B-BOY MODERN

KCN Modern team fits into UCLA's thriving hip-hop dance culture in a unique way. With open auditions, KCN Modern allows the opportunity for dancers from varying dance teams, skill sets, and cultural backgrounds to unite in celebrating Korean culture. The synchronization of each dancer immerses the audience in the production using dance as an art medium.

The Korean traditional fan dance is based on the history of Chosun Dynasty court dances as well as ceremonial dances performed by shamans. Over the years, this popular form of traditional dance has been used at celebrations and gatherings.

The dancers adorned in colorful traditional dresses, hanboks, use the fans to portray powerful floral imagery.



Poongmul, the art of traditional Korean percussion, explores existing historical aspects of Korean culture through diverse musicality. Poongmul exemplifies the concept of “breathing as one.” Poongmul is meant to be a group endeavor, where drummers find unity through work ethics, discipline, and bonding. The bright costumes and the loud drumming bring our culture alive to UCLA.

## TRADITIONAL POONGMUL

# HISTORICAL BACKGROUND:

## HISTORY OF THE JAPANESE MILITARY "COMFORT WOMEN" SYSTEM



1910

The Korean Empire is annexed by the Empire of Japan.



1932

The first Comfort Station is established in Shanghai, China.



1937

The Comfort Women System is institutionalized after the Rape of Nanking.



1945

An estimated number of 200,000 of women from different Asian countries are forced into sexual slavery for the Japanese army.

1940 - 1990



For over 40 years, the tragic victims of these atrocities did not dare say a word until the early 1990's. They were too ashamed, because under Korean traditional culture, they had been taught to protect their virginity at all costs.

1991



Kim Hak-Sun steps forward with her public testimony as a comfort woman and the issue is made public. Protests begin in mass demanding the official apology from the government of Japan.

1992



Japan releases an official report admitting the involvement of the Japanese military in organizing stations, but refused to admit any act of coercion in the recruitment process and shifts blame to private recruiters. Refuses to accept legal responsibility.

Present



The issue is still controversial today. An official agreement was reached by the government of South Korea and Japan in 2015 but it is still met with wide criticisms on both sides.

“Most were teenagers... and were raped by between 10 to 100 soldiers a day at military rape camps... Women were starved, beaten, tortured, and killed. By some estimates only 25 to 30 percent survived the ordeal.”

Chang Jin Lee (activist)



MICHAEL M. HONDA  
17TH DISTRICT, CALIFORNIA

Greetings from Congressman Michael M. Honda  
to the Hanoolim Korean Cultural Awareness Group on the  
Occasion of UCLA Korean Culture Night 2016

April 7, 2016

It gives me great pleasure to welcome everyone to the UCLA Korean Culture Night 2016 (KCN) hosted by the Hanoolim Korean Cultural Awareness Group.

In 1990, Hanoolim was established to educate students about Korean heritage and traditional culture. Hanoolim encourages students not only to strive for academic excellence, but also to take action regarding social and political issues in the Korean American community. Every year, Hanoolim hosts KCN, the largest student-run Korean production in the United States. For over 20 years, this event has educated UCLA students and the Los Angeles community about Korean culture through performing arts. This year, KCN highlights the historical relationship between Korea and Japan.

On behalf of the residents of the 17th Congressional District, I thank Hanoolim Korean Culture Awareness Group for organizing today's event, and I offer my best wishes for its success.

Sincerely,

Michael M. Honda

Michael M. Honda  
Member of Congress



April 7, 2016

Dear Friends,

On behalf of the City of Los Angeles, I welcome you to UCLA's Korean Culture Night.

Los Angeles' Korean American community is a vibrant and important part of our city's cultural mosaic. Thank you to the UCLA's Hanoolim club and its members for opening the door to Korean culture through this production, and for helping bring a greater understanding of L.A.'s diverse communities to tomorrow's leaders.

I send you my best wishes for a memorable event and continued success.

Sincerely,



ERIC GARCETTI

UNIVERSITY OF CALIFORNIA, LOS ANGELES

BERKELEY • DAVIS • DOWNEY • LOS ANGELES • MERCED • RIVERSIDE • SAN DIEGO • SAN FRANCISCO



UCLA

SANTA BARBARA • SANTA CRUZ

OFFICE OF THE CHANCELLOR  
3147 MURPHY HALL, BOX 951465  
LOS ANGELES, CALIFORNIA 90095-1465

April 7, 2016

I am honored to welcome you to Korean Culture Night.

Korean Culture Night has been a cornerstone event on campus for more than 20 years. This celebration of Korean and Korean-American culture showcases the multifaceted talents of our students of Korean ancestry. I am especially pleased that the beauty and richness of Korean culture that is on display tonight is being shared with our entire campus community.

I want to thank all the students in our Korean cultural awareness student group, Hanoolim, who have worked since September to create such an extraordinary event. Their pride and dedication to cultural awareness is inspiring and their efforts are a great source of pride for UCLA.

Sincerely,



Gene D. Block  
Chancellor



안녕하세요, 한국배우 차이 표 입니다. 2016년 UCLA Korean Culture Night의 개최를 진심으로 축하합니다. 특히 캘리포니아를 대표하는 학교인 UCLA의 한국계 학생들이 중심이 되어 준비한 것에 박수를 보냅니다.

여러분은 한국문화의 밤이 왜 중요하다고 생각하십니까? 멀리 이국 땅에서 대학생들이 모여 한국문화를 발표하는 것이 왜 중요할까요?

그것은 바로 한국문화의 밤, 이 행사를 통해 이를 준비한 대학생들이 5000년 한민족의 역사를 이어가는데 한 부분을 담당하기 때문이라고 저는 생각합니다.

그렇습니다. 우리 한민족의 역사는 5,000년입니다. 우리 선조들은 5000천년이라는 시간동안 씨앗을 심어 추수를 하고, 아기를 낳아 가족을 이루고, 기쁠때는 함께 모여 노래하고 춤추고, 슬플때는 함께 끌어안고 울며 그 긴 세월을 살아내었습니다. 그들이 살아낸 세월위에 바로 우리가 지금 서 있는 것이죠.

그렇게 살아낸 우리 모두에게 아로새겨진 것, 그것이 바로 한국문화입니다. 그렇기 때문에 한국문화를 이어간다는 것은 곧 역사를 다음 세대로 계승시킨다는 봉요한 의미를 갖고 있다고 생각합니다. 우리 대학생들이 이번 2016년 한국문화의 밤에서 일본군의 서노리개로 고토를 겪으신 위안부 할머니들에 대한 고연을 한다고 합니다. 할머니들께 후발세대로서 미안하고, 대학생들에게 기성세대로서 부끄럽습니다. 직작에 우리 어른들이 끌어안았어야 할 할머니들을 대학생들이 더 뜨거운 가슴으로 안고 있습니다.

앞서 말씀드린 대로 우리 역사는 5천년입니다. 5천년전 한 엄마가 아기를 낳아 사랑으로 극진히 키워냈습니다. 그 아기가 자라 또 엄마가 되고, 그러기를 수백번 반복하여 위안부 할머니들도 누군가의 귀한 딸들로 태어난것입니다. 그런데 그 분들은 입에 담을수도 없는 일본군의 만행에 더 이상 엄마가 되지도 못했고, 생명을 이어가는 권리도 박탈당해 버렸습니다. 이분들의 아픔은 말로 표현할 수 있는 것이 아닙니다. 세월로 지울 수 있는 것도 아닙니다. 다만 하늘에 가실 날까지 끊임없는 위로와 사랑으로 품어드릴 수 밖에 없는 것이겠죠. 그분들께 관심을 갖고, 그분들을 위로하는 UCLA 한인대학생들을 응원합니다 그리고 축복합니다.

한국문화의 밤이 한국역사의 한 부분이 되는 오늘, 이곳에 오신 여러분들 모두를 환영합니다.

# Real Power for Real People

## Better Ingredients! Better Taste!

Bacchus was developed as a refreshing energy drink by Dong-A Pharm. Co. Ltd. in 1963. It gives a quick surge of energy and helps increase stamina with a more effective formulation & ingredients.



**DONG-A PHARM.**  
17215, Studebaker road, Suite# 335, Cerritos, CA90703  
Tel. 562-860-3153 Fax. 562-860-3241

## CAST

KIJU LEE  
hwang jung hee



"Their lives are their evidence. S/O to Josh, Diane, Eric, our wonderful cast, and ALL our hardworking staff who brought this together. Nothing but love for my friends and familyLEE <3"

EUNICE LIM  
lee young ja



"A special thanks to my family, bestie Christine, and my church for your continual love and support!"

JUNA YI  
kim yoon bok



"Thank you Cast members for working so hard to make the best production possible! Josh and Diane, thank you for all the time and effort you guys put into this show :)"

JOSH HOON KANG  
kim young ho



"Shout out to ODCC, Exchange ministry, APT105, CCM, and RnD! 아버지 어머니 그리고 형 존경하고 사랑합니다! Please enjoy the show!!"

CHRIS HONG  
na kyung soo



"I don't even go here, but I wanted to thank God, my family, my SGCM Small Group Men, the Pepperdinos, E. Kang, C. Choi, and everyone who supported me with this!!"

SAM LEE  
choi dong hyun



"Thank you to my family and friends for their support always!"

ALEX KIM  
colonel hayashi



"I apologize to everyone in advance"

KEVIN JOUNG  
captain kimura



"Shoutout to my homie Jesus, fam, and OMC AG! Love you all! Enjoy the show everyone!"

JIMI LEE  
sergeant morimoto



#uclakcn2016



3014 W 7th St, Los Angeles,  
CA 90005  
(213) 381-9990

Hours Open:  
All Days  
11am - 2am



## CAST

CLAIRE HUH  
ms. lee



#uclakcn2016

GRACE PARK  
koo se ju



"Thank you God for always being sovereign and good and thank you to my family who shower me with love and support, always. Saranghae~  
-Philippians 4:13-"

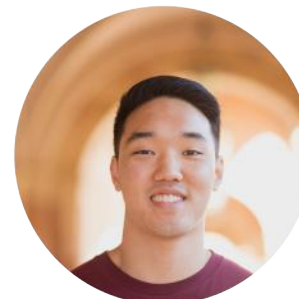
ROSE LEE  
koo jin sook



"Love ya cast fam and thank you to the staff hehe. Also, a huge shoutout to my brothers and sisters in KCM<3"

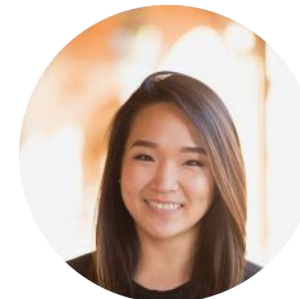
## MODERN

JOE LEE  
coordinator



"MY SQWAD, thank you holding down my last college experience with me. Mary, thank you for being my best friend. Newri, I love you. Nuna, thank you for everything"  
Bye UCLA.

NAYUN MARY LEE  
coordinator



"I want to thank my famILEE for everything. Shoutout to APT217 and my DANCEOFF BABIES <3 But, I couldn't have asked for a better SQWAD to finish my last year at KCN. Thank you guys for being so patient and hardworking. Lastly, thanks Joe for being my brother and for sticking by me all these years.  
WE'RE DONE!"

JISOO CHOI



"KBBQModern"

STELLA CHUNG



"Shoutout to my roomies and all my Modern friends! Also shoutout to my fans and future baes because I know you are all excited for my debut."

STEPHANY KIM



"#go2k16 #ftgg #lewisbae"

TIFFANY GONG



"ε( 'O' )ε"

UCLA  
Korean American Alumni Association

Proudly Supports

When you kill  
a BUTTERFLY



Korean Culture Night 2016

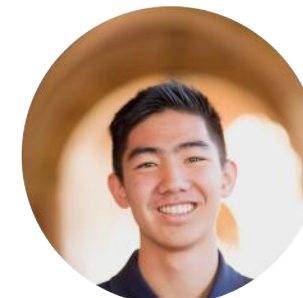
## MODERN

AMY CHOI



"Shoutout to my Ginny, Stacy, Kasa Fam, modern dancers, my future boyfriend, and everyone who worked hard to make this meaningful production possible <3"

BEN MONGKOLVIPAKUL



#uclakcn2016

BIANCA OCAMPO



#uclakcn2016

BRANDON WONG



#uclakcn

CAROLYN KIM



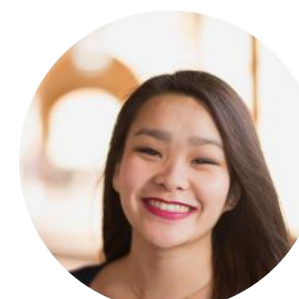
"GO KCN MODERN! THANK YOU MARY AND JOE FOR ALLOWING ME TO MY COORD FOR THE LAST TIME"

DANYEL MOULTON



#uclakcn2016

DEMI NGUYEN



#uclakcn2016

ELIZABETH PEN



#uclakcn2016

HAMILTON OH



"Shout out to my family and my friends back home and of course my friends here. Love you guys :)"

# KOREA Embraces the World!

To Get Closer to the Global Community,  
Korea Is Doing its Best to Make Friends with All People around the World

Enables Korean Studies to Flourish Worldwide  
Brings Together the Cultures of Korea and the World  
Shares Friendship and Knowledge throughout the International Community



## MODERN

JINWOO KWAK



“hi samahang”

JOANNA PAK



“Shoutout to my Wolf Pak and everyone who came to support me and all of our KCN! Thank you and ily v much. Praise the Lord for the opportunity!”

JOSH KIM



#uclakcn2016

JOSH TRAN



#uclakcn

KAREN BACH



“Big thank yous to MOE for the amazing opportunity to dance on KCN Modern with the most talented human beings ever. And shout out to all my fans and baes. YAS”

LAWRENCE WANG



#uclakcn2016

LINCOLN TO



“Shoutout to all the cool kids on Modern and Joe and Mary for being the best coords. 10/10 would recommend. Mom, get the camera! :D”

NICOLE CHUN



#uclakcn2016

PAT GILES



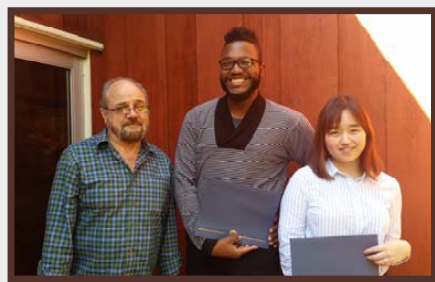
#uclakcn2016

# UCLA 한국학연구소

## CENTER FOR KOREAN STUDIES



Promoting Research | Cultivating Scholars | Sharing Knowledge | Opening Cultural Dialogue



UCLA Center for Korean Studies | 11371 Bunche Hall, Box 951487 Los Angeles, CA 90095-1487  
[www.international.ucla.edu/korea](http://www.international.ucla.edu/korea) | [koreanstudies@international.ucla.edu](mailto:koreanstudies@international.ucla.edu)  
 Phone: 310.825.3284 | Fax: 310.206.3555

## MODERN

RACHEL FUJIKAWA



#uclakcn2016

VICTORIA LEE



"Shoutout to everyone who practiced at Hedrick dance room with me eyy and thank you to my parents for trusting me to do what I want in college."

RYAN KIM



#uclakcn2016

RIA JULIAN



"Shout out to My Peoples... you know who you are! Don't know what I would have done my first few quarters if I didn't meet ya'll. Thank you guys for being my source of happiness, support and for keeping me sane when I thought that UCLA was going to bite my head off. Shout out to the holy coords Mary and Joe!!!"

## POONGMUL

JULIA YI  
 coordinator



"HUGE thank you to my dad and brother who always cheers me on from the front seats. To PhilPill who is always there for me. Most importantly, to my members!"

SALLY OH  
 coordinator




"엄마 아빠 윤경이!! I love you so so much. Thank you for everything always and I hope you liked the show <3 PS: Poongmul fam, 수고했어!! + #F4"

ANNA CHO



"Thank you Hanoolim staff, friends and poongmul coordinators (Sally aka best jangu coord) for making my freshman experience so much better :)"

Congratulations Hanoolim on your  
 24th annual Korean Culture Night!



# 이화식품상사

## E-HWA FOOD PRODUCTS CO.

MEAT PACKER'S | WHOLESALE & DISTRIBUTORS | U.S.D.A. EST. 17338

조영섭 사장


Young Sop Cho President

213.623.6040 (6041 FAX)

E-H Food Inc.

1809 Industrial St.

Los Angeles, CA 90021



POONGMUL

MICHELLE CHO



#uclakcn2016

PETER LEE



"pls"

SABRINA YANG



"Shoutout to Sally and Sharon for all of their patient support with me and to my parents and brother for all the support this first year!"

CHAN JEONG



"I made it mom."

DUKHWAN HONG



#uclakcn2016

GLORIA QUACH



#uclakcn2016

HYERI CHOI



#uclakcn2016

SOFIA CARRO



"I'd like to thank the poongmul coords for allowing me to experience being a token white girl. Also a big thank you to Keanu Reeves for being my boo."

MATTHEW LIM



"Shoutout to my mom, dad, and Ricky. I love you all <3. And to my fellow buk people; you guys are all amazing!"

No. 1 Beauty Salon for  
Korean American community  
for the past 50 years.

No.1 Beauty Salon for  
Hair Straightening in America

Hair Fashion **Leader** in  
Korea and America

UCLA Students  
Special **20% Off**

You must mention this offer  
when you make a reservation.  
You must present UCLA ID when you pay.

**Kim Sun Young**  
Beauty Salon

306 N. Western Ave., Los Angeles, CA 90004 / Toll Free: 1-888-300-1004

[www.kimsunyoung.com](http://www.kimsunyoung.com)

## POONGMUL

MARK SONG



"Another year, another great show! Shoutout to my family, Hanoolim, Poongmul crew, and F4! Could not have done it without you guys' support."

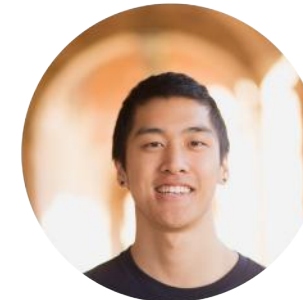
## B-BOY

JAMES LEE  
coordinator



#uclackn2016

MATT CHAN  
coordinator



#uclackn2016

ELIJAH CAPAROSO



"Thank you to my family, Manes, and Samahang Modern!"

ELIZABETH RODRIGUEZ



"I get down, to get high, breaklife"

HELEN LU

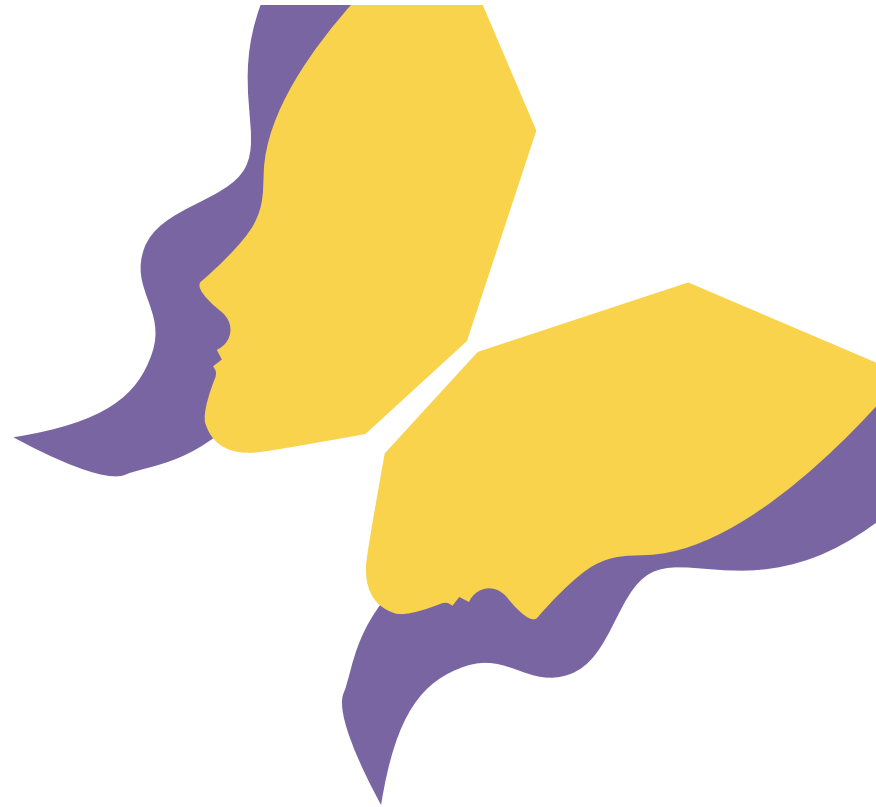


#uclackn2016

HIDETOSHI IKEDA



"Boys and girls, remember that there is style in subtlety."



‘**Nabi[na-be]**’ means ‘butterfly’ in Korean.  
 ‘**Butterfly**’ represents our wish that all the women in agony, including the victims of Japanese Military Sexual Slavery (a.k.a. ‘Comfort Women’), would spread their wings free from discrimination, repression, and violence.

‘**나비**’는 일본군 위안부 문제해결을 위한 활동의 상징물로서, 일본군 위안부 할머니들과 모든 여성들이 차별과 억압, 폭력으로부터 해방되어 자유롭게 날갯짓하기를 염원하는 의미를 담고 있습니다.

**President Angela Lee**

Tel. 714) 353-2336 E-mail: [nabiusalosangeles@gmail.com](mailto:nabiusalosangeles@gmail.com)

<http://cafe.daum.net/nabiusa> [www.facebook.com/NabiFund/](http://www.facebook.com/NabiFund/)

\*Nabifund, Inc., is a non-profit, 501(c)(3) public charity Number 46-4769039.



## B-BOY

JAMIE RYAN



#uclakcn2016

JEFFREY YU



“KCN BBoy Year 2: 2Korean 2 Culture 2Night”

KENJI CHAWALA



#uclakcn2016

NICOLE BROWN



#uclakcn2016

PATRICK XU



“I would not have gotten my dope dance moves if it weren't for the fresh ingredients and quality craftsmanship of Papa John's pizzas. Better ingredients, better pizza, Papa John's.”

SANDRA PARRA



#uclakcn2016

STEVEN YUN



“break life, travel life, just keep on moving”

SPORT INJURY | ACUPUNCTURE | FACIAL | MASSAGE  
ACUTE & CHRONIC PAIN | DETOX & DIET

#UCLA STUDENT  
INSURANCE ACCEPTED  
& BRUIN DISCOUNTS  
WITH STUDENT ID

ALL BRUINS 15% OFF



10921 WEYBURN AVE / LOS ANGELES, CA 90024  
(310)443-7970 | WWW.WHC310.COM  
INFO@WESTWOODHEALINGCENTER.COM

 **Westwood**  
Healing Center

213)623-3250

560 S. LOS ANGELES ST.#6 LOS ANGELES, CA 90013  
VISION21KANG@YAHOO.COM



**Nicole's**  
gourmet coffee & chocolate shop

Get 10% off with this coupon  
on your next purchase!

- Godiva chocolate
- Haagen-Dazs ice cream
- patbingsoo
- boba drink

Koreatown Plaza  
928 Western Ave., Suite 145  
Los Angeles, CA 90006  
Tel: (213) 380 - 4717  
Fax: (213) 380 - 2341

## TRADITIONAL

ALEXANDRIA LEE  
coordinator



"Friends and family, I LOVE YOU and I hope you love KCN!"

KAYLA CHOE  
coordinator



#uclakcn2016

ARAH CHO



"Shoutout to Mama, Appa, and Mich! Apt. 302, here's to 1.5 more years~ CCSC fam, you're the best. #rar. KCM Class of 2017 forever. AA+PY."

BOBAE SARAH JEONG



"Always thankful for God & family. Also, my QUAD SQUAD, Apt 215, & Abe!! I love you all so much :)"

ELLEN RYU



#uclakcn2016

GRACE D. YANG



"Thank you Father God for leading me through another extraordinary chapter of my life! Thanks to: my beloved family, 진주, OMC FC, Holly565, FAFSA, Kayla, Alex, and my traditional girls!"

NARIN KIM



"Chris, Rachel, Michelle, Connie, Harrison, Nick, & Christopher-- thank you and love you all."

SARAH CHUNG



"Big thank yous to MOE for the amazing opportunity to dance on KCN Modern with the most talented human beings ever. And shout out to all my fans and baes. YAS"

SORA KWON



"Shoutout to my people AKA 엄마, 아빠, Glen, Clara, Julia, Apt. #310!!!! Wish each and every one of you guys could be here, but know that I love you all!!!!"

TRADITIONAL

HYEWON KELSEY KANG



"It's an honor and a privilege to be part of such a wonderful team! Thank God for this opportunity. #KCN2k16"

KAYLIN CHO



"SHOUTOUT TO MY ROOMIE ISABALLS!!! also wow thanks for coming to my 2nd show WOW much love thx. love u mommy."

LINDA KANG



"하이 엄마 아빠 아이 러브 유!!!"

SET DESIGN

EUNHAE GRACE YOO  
set designer



#uclakcn2016

SUSAN CHO  
coordinator



"SET TEAM!! Thank you for all your blood, sweat, and tears -- you guys are seriously the best. Mary Park and Han Lim, thank you for your exceptional loyalty."

ESTHER SIM  
coordinator



#uclakcn2016

ALBERT CHO



#uclakcn2016

ANDREA KIM



#uclakcn2016

HAN OOL LIM



"Shoutout to the set team members, rest of the KCN & UCLA Hanoolim. Long Live Hanoolim."

SET DESIGN

MELISSA CHO



"I'm really grateful for the opportunity to work with KCN. It's been a lot of fun so far and I'm glad I get to graduate having experienced this."

NEWRI KIM



#uclakcn2016

SAM VOZOUKOE



#uclakcn2016

SIMON JOO



#uclakcn2016

ANDREW HONG



#uclakcn2016

MARY PARK



"We did it! CONGRATS to my number one roomie SUSAN CHO! There were so many ups and downs throughout this whole thing but you did it! The set looks AMAZING thanks to you <333 Love you to infinity and beyond and GREAT JOB<3"

HAZEL CHOO



"When you feel like quitting, remember why you started" -Unknown. Thankful for KCN to make my last year at UCLA even better! #BESTsetTeamEVER."

JENNY PARK



#uclakcn2016

JIYOUN CHUNG



#uclakcn2016

## MEDIA TEAM

VANESSA CHUNG  
graphic designer



umma, appa, richard.  
always thankful. xxx

YOONA JUN  
graphic designer



"Soli Deo Gloria."

NICOLE FAN  
graphic designer



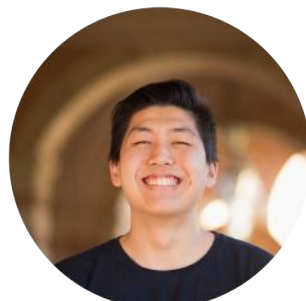
#uclakcn2016

JORDAN CHURCH  
photographer



#uclakcn2016

MATTHEW PAK  
photographer



#uclakcn2016

ELIOTT KIM  
photographer



#uclakcn2016

ERIC CHUNG  
sound engineer



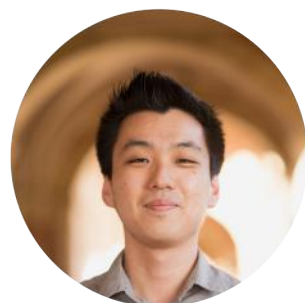
#uclakcn2016

PERNELL QUILON  
videographer



#uclakcn2016

SUNGJOON BAEK  
web master



#uclakcn2016

## ORCHESTRA

STEPHEN SPIES  
music composer



#uclakcn2016

KATE BACICH  
music composer



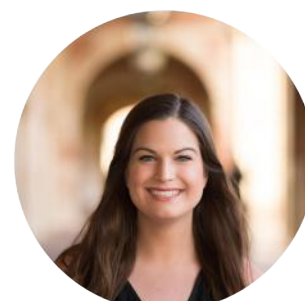
#uclakcn2016

MARY ZENG  
trombone



#uclakcn2016

REBECCA BACICH  
viola



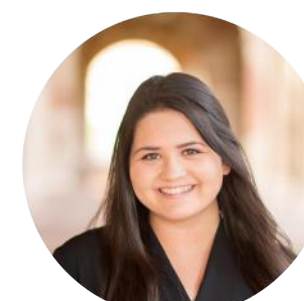
#uclakcn2016

JOYCE KWAK  
violin



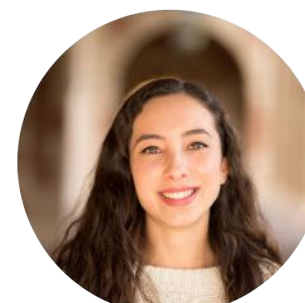
#uclakcn2016

MARI DENAPOLI  
violin



#uclakcn2016

AMARIS HURTADO  
flute



#uclakcn2016

SARA SITHI-AMNUAI  
french horn



#uclakcn2016

HAEZY KIM  
kayagum



#uclakcn2016

## ORCHESTRA

RACHEL MINJOO LEE  
kayagum



#uclakcn2016

NOT PICTURED

KILLIAN KELLY  
cello  
ANDREA VANCURA  
trombone  
KYLE DOMBROSKI  
percussion

ZACHARY THOENNES  
oboe  
YASMEEN RICHARDS  
french horn  
STEVEN GORDON  
percussion, piano

## COSTUME

DAVID HAN  
coordinator



#uclakcn2016

SERA HA



#uclakcn2016

STEVEN JUNG



#uclakcn2016

## EXECUTIVE & CREATIVE STAFF

ERIC LIM  
executive producer



"I thank my awesome and patient staff, my wonderful family for their undying love, and my friends for making this experience memorable. Cheers to the most fun I never want to have again!"

JOSH KANG  
director



"When they introduce me after the show, can y'all get up and start clapping and screaming. I lost most of my friends after I became the director. Family and friends, comeback! I'm done now!"

EDDIE KANG  
associate producer



"가족, 정, 홍사장, 켈비, roomie(s), 형, 누나, Cire, exec staff, and sovereign grace love yall #gggtg"

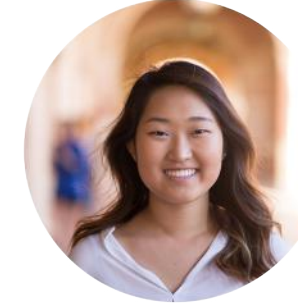
## EXECUTIVE & CREATIVE STAFF

JENNY KIM  
senior advisor



#uclakcn2016

DIANE KIM  
assistant director



"To the 46 women remaining, and so many more that have already left us, this is for you. Thanks to 우리 가족, epndlz, chub, jenny, 영자, kcm, sovereign grace, sg girls & SE, All glory to God, always."

LOIS JEON  
external finance manager



"Much thanks and love to my family and friends, LYLAS, barnacle, chesthair, P&A, ktownrunpeeps, KCN exec, KCM, LFUMC, JCC, and my father in Heaven, GOD. -Lolo-"

JI YUN GIM  
public relations manager



"All glory and honor to Jesus and my fans, we did it. Shoutout to KCM - Gimmy Bears, KCN, OMC, and PSE! Couldn't have done it without everyone."

RICHARD KANG  
internal finance manager



#uclakcn2016

ESTHER PARK  
production manager



"Free at last, free at last, thank God almighty we are free at last." Shoutout to da fambam, LASARANG, barnes&, aptTBA, exec staff, KCM (#inreach), and last but not least, all glory to God. Sugos to all who took part in KCN2k16!!"

ANDREW KIM  
finance assistant



"Thank you exec staff, sov grace, KCM, and Philippines2k15 SQUAD for making this past year unforgettable! Love all you guys and love you 얼마 아빠 누나! #gggtg"

JISOO PARK  
public relations assistant



"When will I ever get to go on this famous Royce Hall stage and speak in front of 1800+ people if it weren't for KCN... Thank you KCN!!"

ANDREW KONG  
production assistant



"yet not I, but the grace of God that was with me. Love for 어머니, 아버지, 할아버지, 할머니, and Charles."

## SPONSORS

KOREA FOUNDATION WASHINGTON  
UCLA KOREAN AMERICAN ALUMNI ASSOCIATION: Hanna Yoon  
WANG GLOBALNET: 이유민  
DONG-A PHARMACEUTICAL: Paul Ryu  
IOTA BREW CAFE  
DDONGGO POCHA  
MOODAEPO II: Brian Chong  
KIM SUN YOUNG BEAUTY SALON: Christian Lee  
UCLA CENTER FOR KOREAN STUDIES: Jenny Yoo  
CHONG KWON & ERINA KWON  
NABI FUND: Angela Lee  
NICOLE'S GOURMET COFFEE & CHOCOLATE SHOP  
EHWA FOOD PRODUCTS: 조영섭  
WESTWOOD HEALING CENTER

# SPECIAL THANKS

CERTAIN INDIVIDUALS, ORGANIZATIONS, AND BUSINESSES HAVE SHOWN KOREAN CULTURE NIGHT 2016 THEIR GENEROSITY AND HAVE GONE THE EXTRA MILE, ALLOWING OUR PRODUCTION TO REACH ITS FULL POTENTIAL. WE WOULD GRACIOUSLY LIKE TO GIVE OUR SPONSORS AND SUPPORTERS A SPECIAL THANK YOU ON BEHALF OF THE STAFF AND CASE OF KOREAN CULTURE NIGHT 2016.

## PARTNERS

UCLA SPARK TEAM  
BOD  
CAMPUS PROGRAMS COMMITTEE  
CONTINGENCY  
KRISTOPHER TADASHI KAUPALOLO  
ELLA CROWELL EVENTS MANAGER  
PATRICK TRAYLOR & KEVIN PONG  
UCLA CENTER FOR KOREAN STUDIES  
UCLA CENTRAL TICKET OFFICE  
AVC  
USAC  
CAC  
SREC PLEDGE FUND  
ARC  
ASRF



-and-

UCLA SPARK

Thank you to our generous donors for making our production successful. This night would not have been possible without your support.



## SPECIAL THANKS TO OUR PATRONS:

Eddie Kang, The Kang Family,  
Peter Lee, John Duncan,  
Seungmin Hwang, Daniel Park,  
Han Kim, Jane Kim,  
Kevin Kibong La, Haesue Jo,  
Amanda Hoskinson, David Kang,  
Ellen Kang, Wesley Choi, Ryan Ho,  
Andy Hwang, Derek Choe,  
Shawn Paek, Jeff Cha,  
Nari Shin, Jeewon Park,  
Daniel Zaki, Mai Thurston,  
Kate Ceredona, Jasmin Han,  
Karen Chester, Bryan Kim,  
Katie Kim, Sam Rho,  
Stephanie Shin, Sung Ho Hong,  
Paul Kim, Kevin Hong,  
Jenny Yoo, Jordan Church,  
Lin Hwang, Jack Chin,  
Young Song, and Sarah Chong.

---

IF YOU WOULD LIKE TO GET INVOLVED IN

***UCLA'S 25TH KOREAN CULTURE NIGHT 2016***

PLEASE EMAIL US AT [UCLAKCN@GMAIL.COM](mailto:UCLAKCN@GMAIL.COM)

---